



# Folding Arm Awnings

*Swedish design for Australian conditions*



**Turnils Folding Arm Awnings offer the best in European performance, designed to suit the Australian climate.**

The entire range features Dyneema® tape on all elbow and shoulder joints for superior strength and durability, making them 15 times stronger than metal chains yet lightweight and resistant to moisture and UV - a must for the outdoors.

With models to suit every outdoor space, from compact patios to grand entertaining decks, Turnils has your shading needs covered.



## Selecting the right awning

The Turnils Folding Arm Awning range features a variety of models that can be customised to suit your needs with a wide variety of sizes, operating options and functions.

### Size

Awnings are made to fit your exact width requirements and, depending on the model, come in a variety of projection options from as little as 1.5m to 4.0m when extended.

### Design

Features such as variable pitch control helps to adjust the angle of the awning for different seasons, and an optional roller valance can provide additional shade and privacy.

### Operation

A range of easy to use operating options are available across the range, from hand-crank operation to fully motorised solutions that can be controlled with the touch of a button.

### Automation

Select a Merger® remote motor solution and pair with the Neo Smart home automation hub to control your awning from your smart phone anywhere in the world!

### Outdoor Safety

For the ultimate in safety select the optional motion sensor which will automatically detect when an awning should retract when wind reaches speed.

### Opening Doors

The Fabric-Beam model is specially designed to create ample clearance for opening doors with an additional support beam across the full width of the awning.

Folding arm awnings provide protection from the sun using a retractable system, allowing you to entertain and enjoy your outdoors without additional posts or ropes, and cleverly tuck away when not in use.



## Sirocco

**The Sirocco Series partners stylish componentry with a contemporary and functional folding arm awning design, covering all size spaces from tiny and narrow through to wide expanses.**

Based on a clever modular Swedish design each awning has its own unique versatility. All Sirocco Models are designed for easy installation directly onto external walls. Additional brackets available for under eaves or roof mounting.

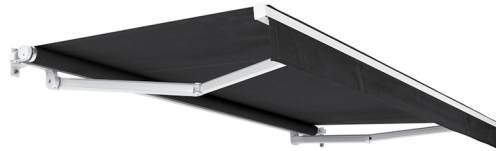


## Sirocco Models

### FA22 Piccolo

**Width:** 1.75m to 5.0m  
**Projection:** 1.5m, 2.0m, 2.5m & 3.0m  
**Pitch:** -5° to -45°

Perfect for small areas, this entry level folding arm awning features compact and non-obtrusive components. A classic design in an elegant open roller style awning.



### FA42 Classic

**Width:** 1.96m to 7.0m  
**Projection:** 1.6m, 2.0m, 2.5m, 3.0m, 3.5m & 4.0m  
**Pitch:** -5° to -45° Adjustable  
*Max width 6.0m at 4.0m projection*

Available with a range of accessories that can be customised to suit almost any situation. Utilising simple square bar installation, this product is easy to fit in a variety of different locations.



### FA44 Design

**Width:** 1.99m to 7.0m  
**Projection:** 1.6m, 2.0m, 2.5m, 3.0m, 3.5m & 4.0m  
**Pitch:** -5° to -45° Adjustable  
*Max width 6.0m at 4.0m projection*

Showcases quality European style with designer finishes, such as the pressure die cast end brackets.



## Sirocco Models

### FA46 Fabric Beam

**Width:** 2.05m to 7.0m  
**Projection:** 1.6m, 2.0m, 2.5m, 3.0m, 3.5m & 4.0m  
**Pitch:** -5° to -45° Adjustable  
*Max width 6.0m at 4.0m projection*

Features a fabric beam creating additional clearance under the inner part of the arm, allowing space for opening doors.



### FA45 Cross-Over

**Width:** 1.13m to 4.6m  
**Projection:** 1.6m, 2.0m, 2.5m, 3.0m, 3.5m & 4.0m

Ideal for narrow spaces. It features cross-over arms enabling a larger projection on a narrow width awning creating the same outdoor shade solution as offered by wider awnings.



### FA48 Semi-Cassette

**Width:** 1.94m to 7.0m  
**Projection:** 1.6m, 2.0m, 2.5m, 3.0m & 3.5m  
**Pitch:** -5° to -40° Adjustable

A semi-enclosed model with compact styling. Available in a width up to 7.0m in either crank or motorised control options, the semi-cassette design provides extra protection for the awning fabric when retracted.





## Viento

**Engineered with fully-motorised operation, the Viento awning has been designed with premium features and enhanced styling.**

The semi-cassette awning profile provides maximum fabric protection by enclosing the awning when retracted, assisting to keep moisture, debris and dirt away from components.

The contemporary style of Viento provides a modern compact appearance, with pitch customisable at the time of installation allowing the awning to be set at the optimal angle for maximum sun protection.

Additional brackets available for under eaves, rafter or roof mounting.



### Viento

**Width:** 1.96m to 7.0m

**Projection:** 1.6m, 2.0m, 2.5m, 3.0m, 3.5m & 4.0m

**Pitch:** 0° to -20°

*Max width 6.0m at 4.0m projection*



## Cabrera

**Offering a slimline full-cassette design, the Cabrera models are motorised as standard providing a luxury shading experience.**

Featuring a full-cassette, fabric is enclosed within the awning when retracted providing the ultimate protection from moisture, debris and dirt.

Both models feature a modular Swedish design, perfect for residential or commercial applications. Like the Viento, the awning pitch can be customised at the time of installation allowing the awning to be set at the optimal angle for maximum sun protection.

A Cabrera XL model is available utilising heavy duty components to create a robust awning for applications up to 7.0 metres wide.

### Cabrera

**Width:** 2.15m to 5.0m  
**Projection:** 2.0m, 2.5m, 3.0m & 3.5m  
**Pitch:** -5° to -40°

### Cabrera XL

**Width:** 2.3m to 7.0m  
**Projection:** 2.0m, 2.5m, 3.0m, 3.5m & 4.0m  
**Pitch:** -5° to -40°  
Max width 6.0m at 4.0m projection



## Operating Options

### Crank Control

Colour-matched to hardware, crank handles provide easy manual operation. Available in a choice of lengths and ergonomically designed for a comfortable grip.

### Motorisation

Powered by an efficient Merger® motor, a range of different remote control options are available:

- Single channel remote for 1 awning
- 4 or 8 channel remote for multiple awnings
- Timer remote with 4 channels.

The Merger folding arm awning motor features an in-line IP68 waterproof connector ensuring that moisture and dust do not damage the motor, making it a durable and long lasting external motor solution.

### Motion Sensor Option

For the ultimate in convenient smart operation, add a motion sensor. These clever battery powered wireless sensors can be programmed to automatically retract the awning in windy conditions. If the sensor battery depletes, the awning will retract notifying you it is time to replace the battery.





## Automate with Neo Smart

**Centralise and simplify your home with Neo Smart, the tiny and talented home automation hub compatible with Merger® remote control motors.**

Control awnings via an easy to use app on your smart phone or partner with Amazon® Alexa®, Google® Assistant or Control4 systems for a fully integrated solution.

### Clever & Convenient

- Create up to 25 custom schedules & scenes with easy one touch app control.
- Operate from your smart phone from any location in the world.
- Wi-Fi enabled, simply plug into power to operate.

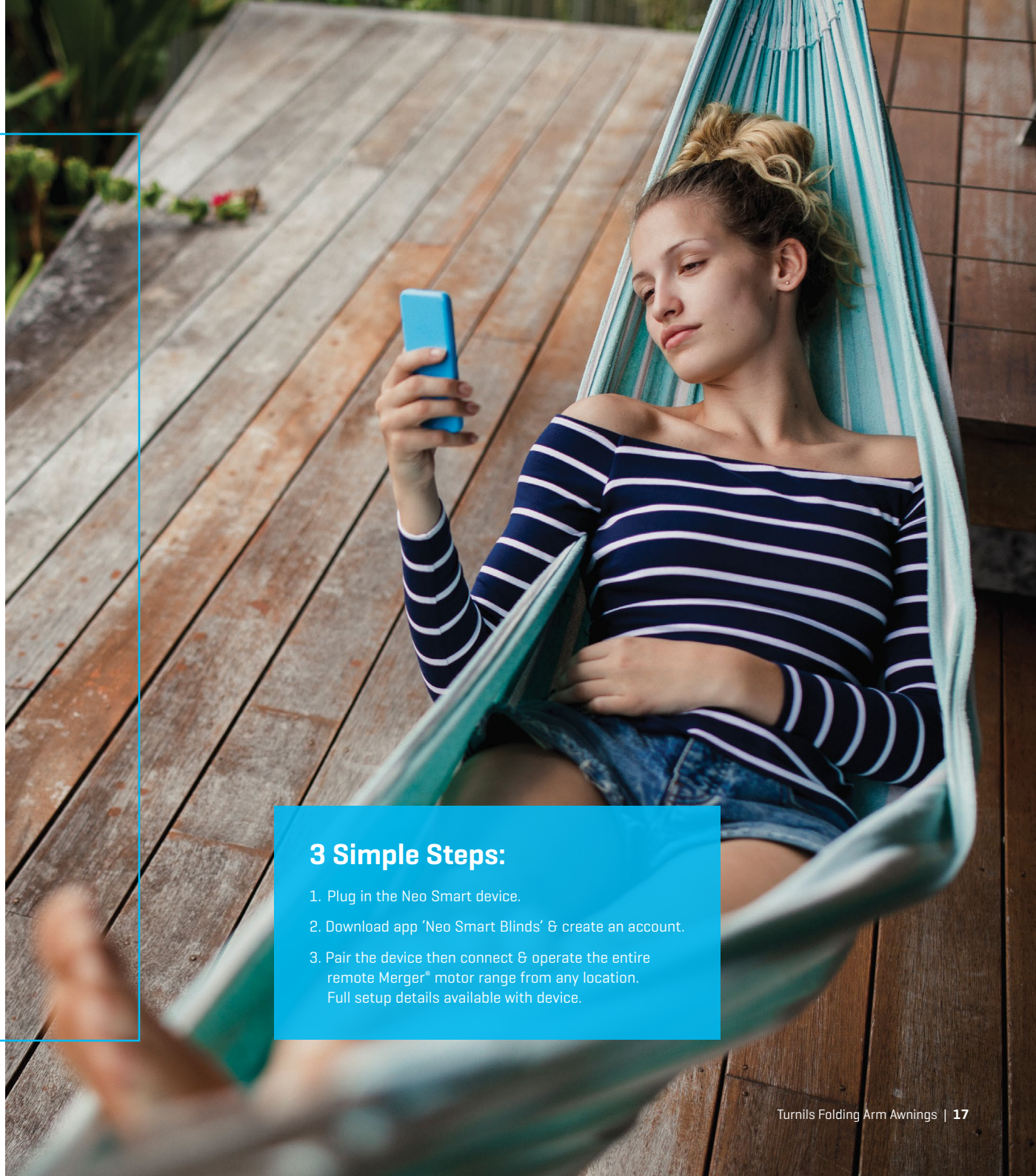
### Compatible

- Controls all Merger® remote motors including internal roller blinds & external awnings.
- One Neo Smart device supports 8 blinds/awnings per "room", with a maximum of 30 rooms totalling 240 motors.



### 3 Simple Steps:

1. Plug in the Neo Smart device.
2. Download app 'Neo Smart Blinds' & create an account.
3. Pair the device then connect & operate the entire remote Merger® motor range from any location. Full setup details available with device.



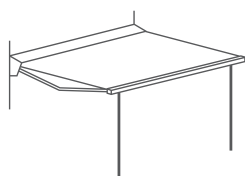


## Tailor your outdoors

An array of additional options are available to customise your awning.

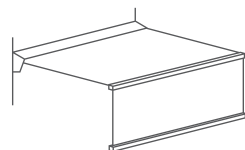
### Telescopic Support

Allows the awning to be projected and secured in windy conditions by stabilising the front bar. Telescopic poles feature removable feet and front rail clips and collapse for easy storage when not in use.



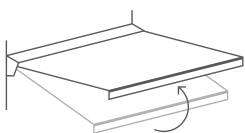
### Roller Valance

Create an additional front fabric drop for maximum shade protection. Partnered with sunscreen fabric, the valance can accommodate a drop of up to 1.0m and is operated by a manual crank.



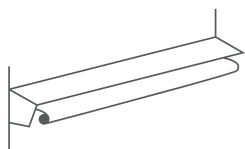
### Pitch Control

A range of  $-5^{\circ}$  to  $-40^{\circ}$  projection angle control is available on selected models. Operation is simple with our unique easy-tilt function allowing adjustment when the awning is projected.



### Designer Hood

Partnering with the Sirocco range, the designer hood provides great fabric protection from the external elements such as rain, assisting with fabric longevity.





# Technical data

Compare the Sirocco, Viento and Cabrera models to find the right solution for any outdoor space.

	Sirocco			
	FA22 Piccolo	FA42 Classic	FA44 Design	FA45 Cross-Over
	<i>Ideal for smaller spaces</i>	<i>Classic styling for larger spaces</i>	<i>A premium designer finish</i>	<i>Cross over arms enables a large projection in narrow spaces</i>
<b>Projection</b>	1.5m, 2.0m, 2.5m, 3.0m	1.6m, 2.0m, 2.5m, 3.0m, 3.5m, 4.0m	1.6m, 2.0m, 2.5m, 3.0m, 3.5m, 4.0m	1.6m, 2.0m, 2.5m, 3.0m, 3.5m, 4.0m
<b>Min. width</b>	1.75m	1.96m	1.99m	1.13m
<b>Max. width</b>	5.0m per unit	7.0m per unit  [Max. 6.0m at 4.0m projection]  Series connection up to 15.0m	7.0m per unit  [Max. 6.0m at 4.0m projection]  Series connection up to 15.0m	4.6m per unit
<b>Pitch angle</b>	-5° to -45°^	-5° to -45° <sup>1</sup> Adjustable	-5° to -45° <sup>1</sup> Adjustable	–
<b>Wind Rating<sup>2</sup></b>	Class 2 [Up to 38km/hr]	Class 2 [Up to 38km/hr]	Class 2 [Up to 38km/hr]	Class 2 [Up to 38km/hr]
<b>Beaufort Scale Equivalent</b>	5	5	5	5
	Optional Accessories			
<b>Motorisation</b>	✓	✓	✓	✓
<b>Pitch Control</b>		✓	✓	
<b>Roller Valance</b>			✓	✓
<b>Hood</b>	✓	✓	✓	✓
<b>Telescopic Support</b>	✓	✓	✓	✓
<b>Crank Handles</b>	✓	✓	✓	✓

<sup>1</sup> Variable pitch angle applies only when the Pitch Control feature is added

<sup>2</sup> Under European Standard 'EN 13561 External blinds – Performance requirements including safety', the above Folding Arm Awning models will meet wind ratings of up to Class 2 – wind speed of up to 29-38km/hr (equivalent to 5 on Beaufort scale) – depending on model no. and size.

**NOTE: These results will only be achieved provided the awning is built and installed with Turnils components according to the Manufacturer's specifications (as stated in the component book) and with a fabric according to the above standard.**

**It is recommended that all awnings be retracted during wet or windy conditions.**

Refer to our manufacturer's guide for full limitations, width, projection and wind rating information.

^Model features variable pitch that is set at the time of installation

# Technical data

Sirocco	Viento	Cabrera		
FA46 Fabric-Beam	FA48 Semi-Cassette	FA58 Viento	Cabrera	Cabrera XL
<i>Fabric beam creates ample clearance for opening doors</i>	<i>Semi-enclosed compact style</i>	<i>Contemporary styling with near full-cassette look</i>	<i>Premium motorised full-cassette design</i>	<i>Extra Large premium motorised full-cassette design</i>
1.6m, 2.0m, 2.5m, 3.0m, 3.5m, 4.0m	1.6m, 2.0m, 2.5m, 3.0m, 3.5m	1.6m, 2.0m, 2.5m, 3.0m, 3.5m, 4.0m	2.0m, 2.5m, 3.0m, 3.5m	2.0m, 2.5m, 3.0m, 3.5m, 4.0m
2.05m	1.94m	1.96m	2.15m	2.3m
7.0m per unit  [Max. 6.0m at 4.0m projection]  Series connection up to 15.0m	7.0m per unit  Series connection up to 15.0m	7.0m per unit  [Max. 6.0m at 4.0m projection]	5.0m per unit	7.0m per unit  [Max. 6.0m at 4.0m projection]
-5° to -45° <sup>1</sup> Adjustable	-5° to -40° <sup>1</sup> Adjustable	0° to -20°^	-5° to -40°^	-5° to -40°^
Class 2 [Up to 38km/hr]	Class 2 [Up to 38km/hr]	Class 2 [Up to 38km/hr]	Class 2 [Up to 38km/hr]	Class 2 [Up to 38km/hr]
5	5	5	5	5
✓	✓	Standard	Standard	Standard
✓	✓	^	^	^
✓	✓			
✓	✓	Standard	Standard	Standard
✓	✓	✓		
✓				

## The Beaufort Wind Scale

Class	Wind Strength	Wind Speed [km/h]	Wind Speed [m/s]	Pressure [N/m²]
0	1-3	≤ 19	≈ 5.3	<40
1	4	20-28	≈ 7.7	40
2	5	29-38	≈ 10.5	70

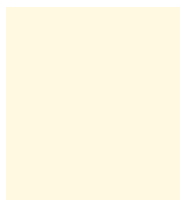
Awnings must be mounted with the correct number of installation brackets and with suitable fasteners in order to match the specified wind classes.



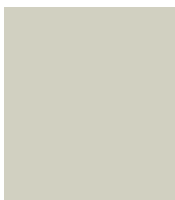
## Hardware Colour Range

**The Turnils Folding Arm Awning range is available in 3 colours.**

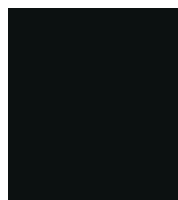
Hardware finishes are engineered to withstand the harsh Australian climate with superior UV protection. Accessories are available in matching colours.



White



Silver



Black





## Why Wait?

Speak with your Turnils Folding Arm Awnings Retailer to help design your awning, built in Australia and fully installed by a trained professional.

---

For more information please contact your Turnils Retailer or visit us online at [turnils.com.au](https://turnils.com.au)

[turnils.com.au](https://turnils.com.au)



For more information contact us on:  
[hdcustservice@hunterdouglas.com.au](mailto:hdcustservice@hunterdouglas.com.au)

© Copyright 2019 Hunter Douglas Limited [ABN 98 009 675 709], 10/2019 18 319.010  
Merger® is a registered trade mark of Hunter Douglas Limited.  
Turnils is a registered Trade Mark of Hunter Douglas Scandinavia AB.  
Note: It is recommended that all awnings be retracted during wet or windy conditions.  
Dyneema® is a registered Trade Mark of DSM IP Assets B.V.  
Google® is a registered Trade Mark of Google LLC.  
Amazon® and Alexa® are registered Trade Marks of Amazon Technologies, Inc.  
Warranty conditions apply. Refer to [turnils.com.au](https://turnils.com.au) for details.