



Petra

Blockout Fabric | 3.0m width | Roller Blind

Petra

Petra	Blockout
Privacy Factor:	High
Composition:	100% Polyester
Thickness:	0.72 +/- 0.10mm
Weight:	499 gsm +/- 30gsm
Cutting Technique:	Ultrasonic, Aeronaut
Colourfastness:	5 Blue Scale (AS 2001.4.21)
Applications:	Roller Blind
Features:	Proudly Made in Australia
Fire Retardancy:	Suitable for class 2-9(a) and (c) buildings.
Item:	82.600.9XX
Width:	3000mm
Roll Length:	20 metres
Roll Weight:	38kg

Solar protection indicators are laboratory-tested.
The most relevant and widely used thermal comfort factors are as follows:

Thermal Comfort				Glazing & Fabric					Visual Comfort	
Colour	Ts	Rs	As	GTOT A	GTOT B	GTOT C	GTOT D	G Value	TL / TV	RL
Organic	0	74	26	28	32.7	32.7	32.7	6.8	0	83
Osprey	0	73	27	28.4	32.9	32.9	32.9	7	0	82
Symphony	0	73	27	28.4	32.9	32.9	32.9	6.9	0	80

The fenestration property tests were conducted in accordance with EN 410 (1998), EN 14501:(2005), and EN 14500:(2008).

THERMAL COMFORT

Fabric Only

Ts Solar Transmittance (%)

Rs Solar Reflectance (%)

As Solar Absorbance (%)

Solar radiation is always partially transmitted through, absorbed or reflected by the fabric. The sum of all 3 equals 100. Ts + Rs + As = 100 % of solar energy.

Fabric & Glazing

Test data has been supplied using the following glazing types:

- **A** Clear single glazing (4mm float)
- **B** Clear double glazing (4mm float + 12mm space + 4mm float)
- **C** Double glazing low-e coating and argon filled (4mm float + 16mm space + 4mm float)
- **D** Reflective double glazing with low-e coating and argon filled (4mm + 16mm space + 4mm float)

GTOT (Range 0-1)

The Solar Heat Gain Coefficient (SHGC), measures the window's (fabric and glass) ability to transmit solar energy into a room. The SHGC is commonly referred to as g-tot. SHGC/g-tot is a calculation of the g-values of the solar protection device (fabric) and the glazing (A, B, C, D). The lower the GTOT value, the greater its ability to insulate against solar heat build-up.

VISUAL COMFORT

Fabric Only

TL / TV Light Transmittance (%)

RL Light Reflectance (%)

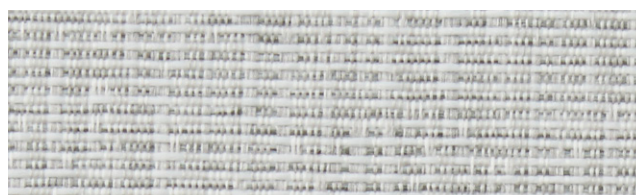
Note: Colours are as accurate as the printing process allows.



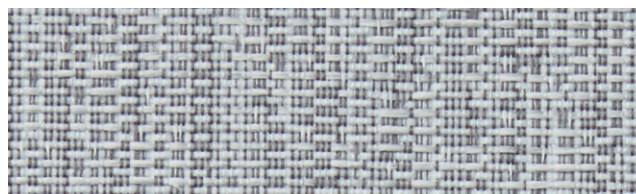
Foam



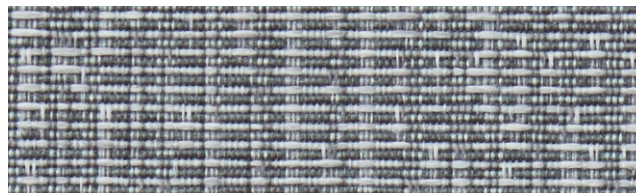
Brulee



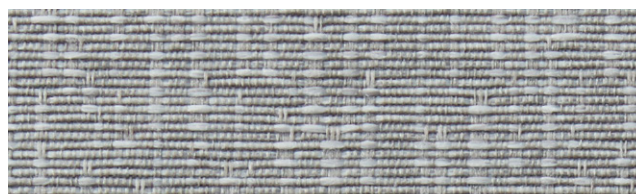
Organic



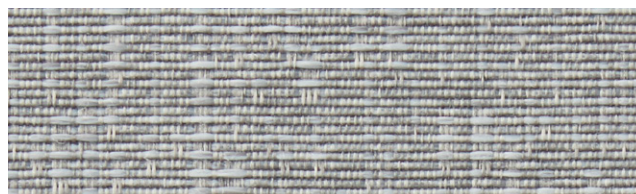
Osprey



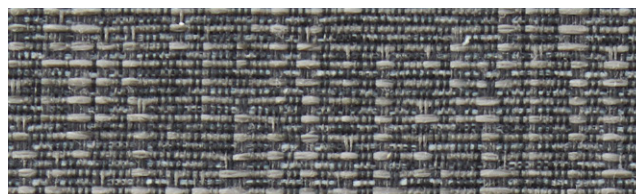
Oyster



Shimmer



Raven



Symphony